

# GEM-FLOW™ | G75-LDO

## Long Distance Operator 2 Way, 3 Way NC, NO

### Technical Data

Function	2 Way, 3 Way NC, NO
Current	Holding 4mA
Pressure range	Refer to G75 Latch operator
Power	DC12V (0.05W) up to DC24V (0.1W)
Connection	Red/Black - power supply   Green/Black - coil
Ambient temp	-10°C to 60°C
Solenoid	Compatible with G75 4Ω latch operator
Valve	Can operate any valve equipped with 3/4" UNEF solenoid cavity (Richdel® type).
Applications	<ul style="list-style-type: none"> <li>• Cost saving wiring for remote solenoid operation</li> <li>• Power saving and heat prevention on continuous energized solenoid</li> </ul>
Voltage	Voltage and power consumption - see table
Standard protection class	IP67 (LDO only)

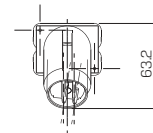
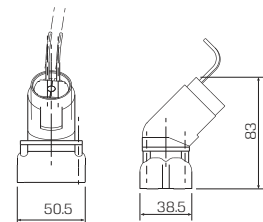


LDO unit assembled with G75-A operator and solenoid  
A small section conductor can be used at a distance of up to 5 kms

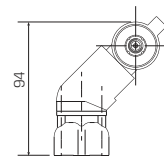
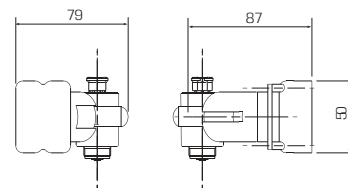
\* For recommended wire parameters, please refer to Long distance operators charts

Voltage	Distance (km)	Conduit section (mm <sup>2</sup> )	Delay time (sec)	
			On	Off
12/24	5	0.5	3	1

\* Max conduit resistance 390 at nominal voltage



2 Way



3 Way

### How to Order

<b>G75-LDO</b>	-	<b>VOLTAGE</b>	-	Please refer to the "How to Order" definitions of the assembled G75 valve.
		24 VAC & 12-24 VDC	9	

#### Example: G75-LDO-9-G75-A-11032B-1

GEM-FLOW™ G75-LDO 24V AC is attached to a G75-A with flange, 1/8" BSP, 3W NC 1.2 orifice, no manual override, 4Ω latch coil, two wires

\* To order special valves manufactured according to your specific requirements, please contact our technical sales department