

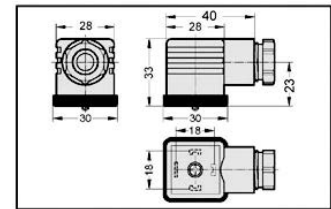
# COILS & OPERATORS

## Connectors

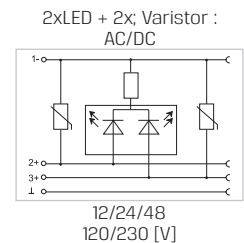
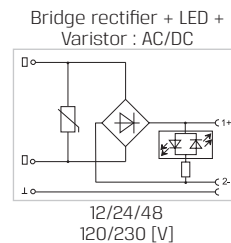
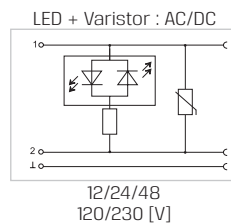
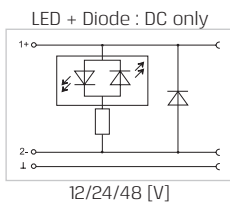
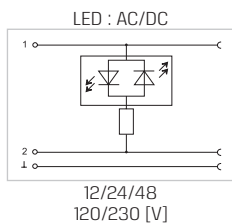
### KA DIN 43650-A | GEM-SOL® Coils | ISO 4400

#### Description

Housing	black/grey/transparent
Contacts	screw with conductor protection
Number of poles	2 or 3 + $\frac{1}{2}$
Contact spacing	18 mm
Cable entry	PG9 - PG11 - 1/2 NPTF
Gasket	NBR profile (other types on request)
Fixing screw	M3 x 32 * Max. tightening torque for the connector screw : 0.5 Nm
Earth position	H12 (opposite to cable entry)
Protection class	IP65 (mated)
Max. conductor section	1.5 mm <sup>2</sup>
Standard circuits (housing black-grey)	See "How to Order" coding
Standard circuits (transparent housing)	See "How to Order" coding
LED color (transparent)	Amber



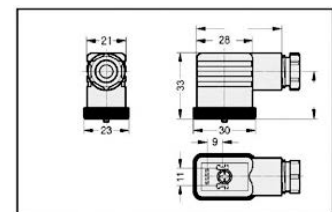
#### Circuit Versions



### KA DIN 43650-B | G80 Coils | Industrial

#### Description

Housing	black/grey/transparent
Contacts	screw with conductor protection
Number of poles	2 or 3 + $\frac{1}{2}$
Contact spacing	11 mm
Cable entry	PG7 - PG9
Gasket	NBR profile (other types on request)
Fixing screw	M3 x 32 * Max. tightening torque for the connector screw : 0.5 Nm
Earth position	H12 (opposite to cable entry)
Protection class	IP65 (mated)
Max. conductor section	1.5 mm <sup>2</sup>
Standard circuits (housing black-grey)	See "How to Order" coding
Standard circuits (transparent housing)	See "How to Order" coding
LED color (transparent)	Amber



#### Circuit Versions

