

COILS & OPERATORS

Operators

GEM-SOL® | GEM-O

Operator 2 Way, 3 Way NC, NO

Applicable for GEM-SOL® A32(GEM-A), S32(GEM-S) & Z32(GEM-Z) valves

Technical Data

Function	2 Way, 3 Way NC, NO
Orifice size	0.8 to 3mm
Pressure range (bars)	See solenoid valve performances
Temperature range	Fluid : -10°C to 80°C (no freezing) Ambient : -10°C to 50°C
Response time	16 to 36 ms complete cycle
Materials in contact with media	Operator: Stainless Steel AISI 300 & 400 series Shading ring: standard - Copper upon request - silver and aluminium Note : Operator for DC is without shading ring and may not be used for AC Orifice: Stainless Steel Spring: Stainless Steel AISI 300 series
Media	Air, gas, water, fuel, oil etc.
Threads on operator tube	G1/4" male and G1/8" or 1/8" NPT female to connect exhaust, muffler etc.
Operator assembly	By screwing M20x1 hexagonal 22mm to the valve body and fixing coil by one G1/4" hexagonal 19mm metal or plastic nut. • Max. tightening torque : 3 N/m
Coil fixing	Any position, can be turned 360° around the operator.
Coil data	See technical GEM-SOL® coil data
Coil voltage	• Voltage and power consumption - see table • All Baccara coil voltages are ±10% of nominal

• ADC operators and valves are suitable for use with AC 8W or DC 10W.

Voltage & Power Consumption

V	AC (W)						DC (W)		
	50 Hz			60 Hz			10	5.5	3.5
6							•	•	•
12	•			•			•	•	•
24	•	•	•	•	•	•	•	•	•
48	•			•			•		
110	•			•	•		•		
120	•			•	•				
220	•	•	•	•			•		
230	•	•		•	•				
240	•			•			•		

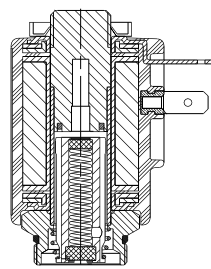
• Available options



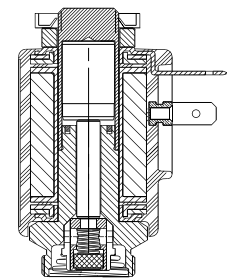
NO through base



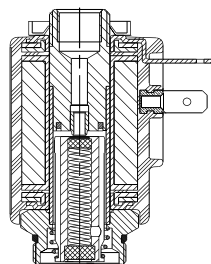
Standard 2 Way/3 Way



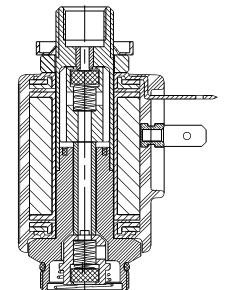
2 Way NC



2 Way NOa through base



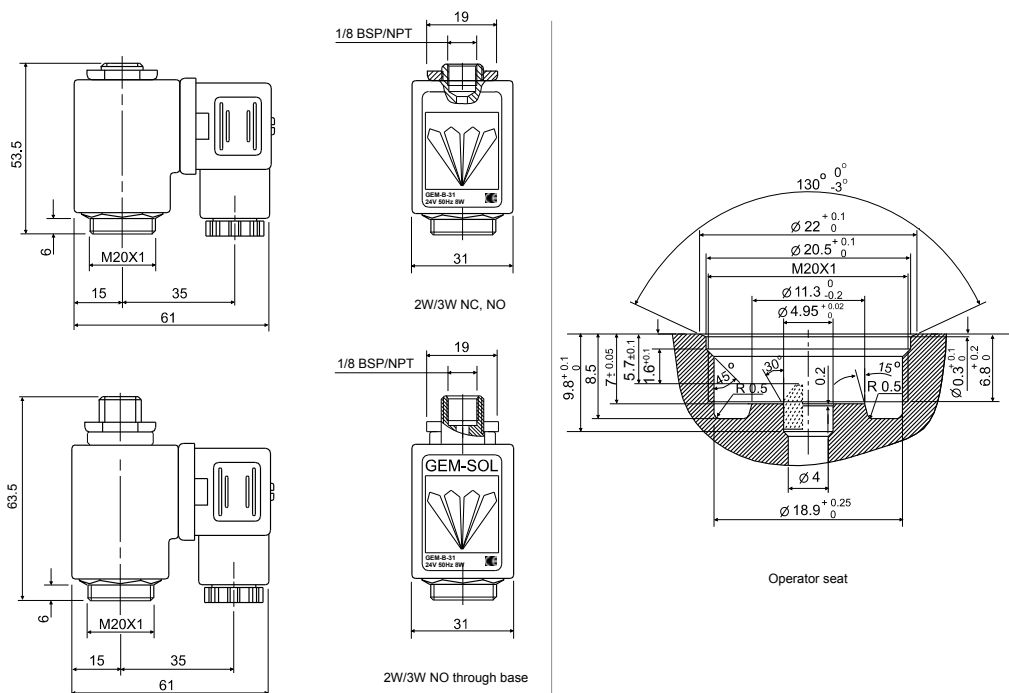
3 Way



3 Way NOa through base

GEM-SOL® | GEM-O | Operator 2 Way, 3 Way NC, NO

Dimensions



How to Order

2 Way

GEM-O	2W	FUNCTION	SEALS	VOLTAGE	POWER	CONNECTOR
		2W NC 1	NBR N	without coil 0	No coil 0	with 1
		2W NO ⁽¹⁾ 2a	FKM V	6 ⁽⁴⁾ 1	AC8W 50Hz 1	with LED 2

3 Way

GEM-O	PORT	FUNCTION	ORIFICE	SEALS	VOLTAGE	POWER	CONNECTOR
	1/8" BSP 10	2W NO 2	0.8 1	EPDM E	12 2	AC8W 60Hz 2	flying leads coil * 4
	1/8" NPT 11	3W NC 3	1.2 2	PTFE ⁽³⁾ T	24 3	DC10W 3	with 1/2" Hub 5
		3W NO 4	1.6 3	FFKM ⁽²⁾ K	48 4	AC5.5W 50Hz 4	surge protection with LED * 6
		3W NO ⁽¹⁾ 4a	2.0 4		110 5	AC5.5W 60Hz 5	connector with moulded cable 7
			2.4 5		120 6	AC2.5W 50/60Hz 6	other 9
			3.0 6		220 7A	DC5.5W 7	
			230 7		DC3.5W 8		
				240 8			
				Latch/other * ⁽⁵⁾ 9			

* **SPECIAL OPTIONS** | Extended lead times, Non-stock items, MOQ may be applicable

Example : **GEM-O-2W1-N-341**

GEM-SOL® GEM-O Operator 2W NC, NBR, 24V AC 5.5W 50Hz with connector

Example : **GEM-O-1034-V-341**

GEM-SOL® GEM-O Operator, 1/8" BSP, 3W NC, Orifice 2.0, FKM, 24V AC 5.5W 50Hz with connector

(1) Supply pressure through base

(2) FFKM O-ring is available only upon request

When ordering FFKM seals, please consult with our technical sales department about O-ring compound

(3) For PTFE seals, the O-ring is FKM seal as default. Please contact us if you require a different O-ring material

(4) DC only

(5) For specifying Latch type coil, please refer to A3P32 (GEM-A3P) valve - How to Order table

* Note: When ordering without coil, please define what current and pressure rating is needed (DC, AC or ADC), otherwise an ADC valve will be supplied.

* To order operators manufactured according to your specific requirements, please contact our technical sales department.