

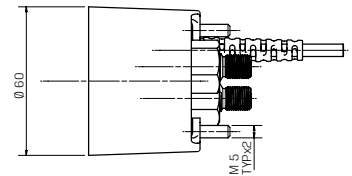
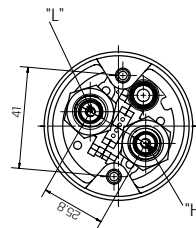
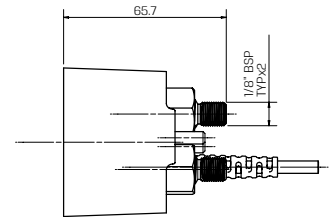
GEM-FLOW™ | G75-ADP

Baccara Analog Differential Pressure Sensor

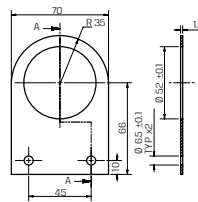
- Differential pressure to current transducer
- Suitable to work with both media - air and liquid
- Main application: analog sensor for filters backwash

Technical Data

Mechanical	<ul style="list-style-type: none"> • Operating temperature: -10°C to 60°C (no freezing) • Outdoor UV protection • Measuring pressure range: 0-7 bar (0-101.5 PSI) • "H" proof pressure: 14 bar (203 PSI) • "H" pressure must be \geq "L" pressure
Electrical	<ul style="list-style-type: none"> • Power supply: 5V DC • RED: (+) 5V • BLACK: (-) 5V • ORANGE: analog output • Analog output value: 0.2V to 4.7V, [V out = (0.006429xKpa+0.2)± Error] • Output accuracy: 2.5% of full scale
Mounting	<ul style="list-style-type: none"> • 2" (52mm) diameter • 2ft (60cm) 3 wires cable • Pressure ports 1/8" BSP/NPT (male) • High pressure port is marked by the letter "H" on the housing • Connect high pressure before low pressure • Disconnect low pressure before high pressure
Standard protection class	<ul style="list-style-type: none"> • IP66



Optional Mounting Bracket



How to Order

G75-ADP	-	TYPE	MOUNTING BRACKET	
		Stand alone	1	without 0 with 1

Example: G75-ADP-10

GEM-FLOW™ G75-ADP Baccara Analog Differential Pressure sensor, stand alone, without mounting bracket

* To order controllers manufactured according to your specific requirements, please contact our technical sales department